

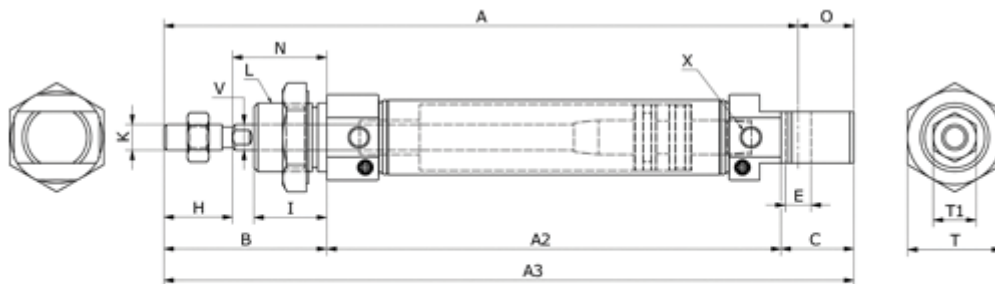
# Data Sheet



Article number: 58MIC20S0015CAG

Description: Cylinder MIC-20x15-S-CA-G, Ø20x15  
Double acting with cushin type - port 1/8"

## Measures



|               |       |        |           |          |
|---------------|-------|--------|-----------|----------|
| A             | = 115 | I      | = 20      | V = 8    |
| A2            | = 62  | K      | = M8x1,25 | X = 1/8" |
| A3            | = 126 | L      | = M22x1,5 |          |
| B             | = 44  | N      | = 24      |          |
| Bore diameter | = 20  | O      | = 11      |          |
| C             | = 20  | Stroke | = 15      |          |
| E             | = 8   | T      | = 12      |          |
| HS            | = 20  | T1     | = 29      |          |